

**geb**nipple



**BARREL NIPPEL**

S. 113

Barrel nipple from 1/8" up to 4", 30 mm – 2000 mm length

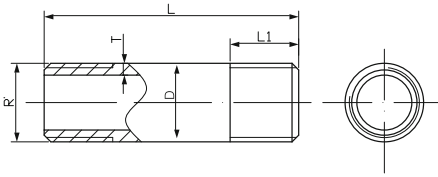


**SOCKETS**

S. 119

Sockets from 1/8" up to 4"

BARREL NIPPLE GALVANIZED OR BLACK



**PARAMETERS:** following to DIN EN 10241

**MATERIAL:** steel pipe according to DIN EN 10255

**THREADS:** accordingly to ISO 7/1

**SIZES:** from 3/8" to 4"

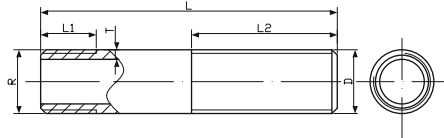
Thread size (R)			Code galvanized	Code black	Dimension [mm]			
x (L) length			Barrel nipples	Barrel nipples	D	T	L	L1
1/8"	x	30 mm	70.030.01V	70.030.01S	10,2	2,0	30	9,2
1/8"	x	40 mm	70.040.01V	70.040.01S	10,2	2,0	40	9,2
1/8"	x	50 mm	70.050.01V	70.050.01S	10,2	2,0	50	9,2
1/8"	x	60 mm	70.060.01V	70.060.01S	10,2	2,0	60	9,2
1/8"	x	70 mm	70.070.01V	70.070.01S	10,2	2,0	70	9,2
1/8"	x	80 mm	70.080.01V	70.080.01S	10,2	2,0	80	9,2
1/8"	x	100 mm	70.100.01V	70.100.01S	10,2	2,0	100	9,2
1/8"	x	120 mm	70.120.01V	70.120.01S	10,2	2,0	120	9,2
1/8"	x	150 mm	70.150.01V	70.150.01S	10,2	2,0	150	9,2
1/8"	x	180 mm	70.180.01V	70.180.01S	10,2	2,0	180	9,2
1/8"	x	200 mm	70.200.01V	70.200.01S	10,2	2,0	200	9,2
1/8"	x	250 mm	70.250.01V	70.250.01S	10,2	2,0	250	9,2
1/8"	x	300 mm	70.300.01V	70.300.01S	10,2	2,0	300	9,2
1/4"	x	30 mm	70.030.02V	70.030.02S	13,5	2,3	30	13,7
1/4"	x	40 mm	70.040.02V	70.040.02S	13,5	2,3	40	13,7
1/4"	x	50 mm	70.050.02V	70.050.02S	13,5	2,3	50	13,7
1/4"	x	60 mm	70.060.02V	70.060.02S	13,5	2,3	60	13,7
1/4"	x	80 mm	70.080.02V	70.080.02S	13,5	2,3	80	13,7
1/4"	x	100 mm	70.100.02V	70.100.02S	13,5	2,3	100	13,7
1/4"	x	120 mm	70.120.02V	70.120.02S	13,5	2,3	120	13,7
1/4"	x	140 mm	70.140.02V	70.140.02S	13,5	2,3	140	13,7
1/4"	x	150 mm	70.150.02V	70.150.02S	13,5	2,3	150	13,7
1/4"	x	160 mm	70.160.02V	70.160.02S	13,5	2,3	160	13,7
1/4"	x	180 mm	70.180.02V	70.180.02S	13,5	2,3	180	13,7
1/4"	x	200 mm	70.200.02V	70.200.02S	13,5	2,3	200	13,7
1/4"	x	250 mm	70.250.02V	70.250.02S	13,5	2,3	250	13,7
1/4"	x	300 mm	70.300.02V	70.300.02S	13,5	2,3	300	13,7
3/8"	x	30 mm	70.030.03V	70.030.03S	17,2	2,3	30	12,0
3/8"	x	40 mm	70.040.03V	70.040.03S	17,2	2,3	40	12,0
3/8"	x	50 mm	70.050.03V	70.050.03S	17,2	2,3	50	12,0
3/8"	x	60 mm	70.060.03V	70.060.03S	17,2	2,3	60	12,0
3/8"	x	70 mm	70.070.03V	70.070.03S	17,2	2,3	70	12,0
3/8"	x	80 mm	70.080.03V	70.080.03S	17,2	2,3	80	12,0
3/8"	x	100 mm	70.100.03V	70.100.03S	17,2	2,3	100	12,0
3/8"	x	120 mm	70.120.03V	70.120.03S	17,2	2,3	120	12,0
3/8"	x	130 mm	70.130.03V	70.130.03S	17,2	2,3	130	12,0
3/8"	x	150 mm	70.150.03V	70.150.03S	17,2	2,3	150	12,0
3/8"	x	180 mm	70.180.03V	70.180.03S	17,2	2,3	180	12,0
3/8"	x	200 mm	70.200.03V	70.200.03S	17,2	2,3	200	12,0
3/8"	x	250 mm	70.250.03V	70.250.03S	17,2	2,3	250	12,0
3/8"	x	300 mm	70.300.03V	70.300.03S	17,2	2,3	300	12,0

Thread size (R)			Code galvanized	Code black	Dimension [mm]			
x (L) length			Barrel nipples	Barrel nipples	D	T	L	L1
1/2"	x	30 mm	70.030.04V	70.030.04S	21,3	2,6	30	15,0
1/2"	x	40 mm	70.040.04V	70.040.04S	21,3	2,6	40	15,0
1/2"	x	50 mm	70.050.04V	70.050.04S	21,3	2,6	50	15,0
1/2"	x	60 mm	70.060.04V	70.060.04S	21,3	2,6	60	15,0
1/2"	x	70 mm	70.070.04V	70.070.04S	21,3	2,6	70	15,0
1/2"	x	80 mm	70.080.04V	70.080.04S	21,3	2,6	80	15,0
1/2"	x	90 mm	70.090.04V	70.090.04S	21,3	2,6	90	15,0
1/2"	x	100 mm	70.100.04V	70.100.04S	21,3	2,6	100	15,0
1/2"	x	110 mm	70.110.04V	70.110.04S	21,3	2,6	110	15,0
1/2"	x	120 mm	70.120.04V	70.120.04S	21,3	2,6	120	15,0
1/2"	x	130 mm	70.130.04V	70.130.04S	21,3	2,6	130	15,0
1/2"	x	140 mm	70.140.04V	70.140.04S	21,3	2,6	140	15,0
1/2"	x	150 mm	70.150.04V	70.150.04S	21,3	2,6	150	15,0
1/2"	x	160 mm	70.160.04V	70.160.04S	21,3	2,6	160	15,0
1/2"	x	180 mm	70.180.04V	70.180.04S	21,3	2,6	180	15,0
1/2"	x	200 mm	70.200.04V	70.200.04S	21,3	2,6	200	15,0
1/2"	x	300 mm	70.300.04V	70.300.04S	21,3	2,6	300	15,0
1/2"	x	400 mm	70.400.04V	70.400.04S	21,3	2,6	400	15,0
1/2"	x	500 mm	70.500.04V	70.500.04S	21,3	2,6	500	15,0
1/2"	x	1000 mm	70.1000.04V	70.1000.04S	21,3	2,6	1000	15,0
1/2"	x	1500 mm	70.1500.04V	70.1500.04S	21,3	2,6	1500	15,0
1/2"	x	2000 mm	70.2000.04V	70.2000.04S	21,3	2,6	2000	15,0
3/4"	x	30 mm	70.030.05V	70.030.05S	26,9	2,6	30	15,0
3/4"	x	40 mm	70.040.05V	70.040.05S	26,9	2,6	40	15,0
3/4"	x	50 mm	70.050.05V	70.050.05S	26,9	2,6	50	15,0
3/4"	x	60 mm	70.060.05V	70.060.05S	26,9	2,6	60	15,0
3/4"	x	70 mm	70.070.05V	70.070.05S	26,9	2,6	70	15,0
3/4"	x	80 mm	70.080.05V	70.080.05S	26,9	2,6	80	15,0
3/4"	x	90 mm	70.090.05V	70.090.05S	26,9	2,6	90	15,0
3/4"	x	100 mm	70.100.05V	70.100.05S	26,9	2,6	100	15,0
3/4"	x	110 mm	70.110.05V	70.110.05S	26,9	2,6	110	15,0
3/4"	x	120 mm	70.120.05V	70.120.05S	26,9	2,6	120	15,0
3/4"	x	130 mm	70.130.05V	70.130.05S	26,9	2,6	130	15,0
3/4"	x	140 mm	70.140.05V	70.140.05S	26,9	2,6	140	15,0
3/4"	x	150 mm	70.150.05V	70.150.05S	26,9	2,6	150	15,0
3/4"	x	160 mm	70.160.05V	70.160.05S	26,9	2,6	160	15,0
3/4"	x	180 mm	70.180.05V	70.180.05S	26,9	2,6	180	15,0
3/4"	x	200 mm	70.200.05V	70.200.05S	26,9	2,6	200	15,0
3/4"	x	250 mm	70.250.05V	70.250.05S	26,9	2,6	250	15,0
3/4"	x	300 mm	70.300.05V	70.300.05S	26,9	2,6	300	15,0
3/4"	x	400 mm	70.400.05V	70.400.05S	26,9	2,6	400	15,0
3/4"	x	500 mm	70.500.05V	70.500.05S	26,9	2,6	500	15,0
3/4"	x	1000 mm	70.1000.05V	70.1000.05S	26,9	2,6	1000	15,0
3/4"	x	1500 mm	70.1500.05V	70.1500.05S	26,9	2,6	1500	15,0
3/4"	x	2000 mm	70.2000.05V	70.2000.05S	26,9	2,6	2000	15,0
1"	x	30 mm	70.030.06V	70.030.06S	33,7	3,2	30	17,0
1"	x	40 mm	70.040.06V	70.040.06S	33,7	3,2	40	17,0
1"	x	50 mm	70.050.06V	70.050.06S	33,7	3,2	50	17,0
1"	x	60 mm	70.060.06V	70.060.06S	33,7	3,2	60	17,0
1"	x	70 mm	70.070.06V	70.070.06S	33,7	3,2	70	17,0
1"	x	80 mm	70.080.06V	70.080.06S	33,7	3,2	80	17,0
1"	x	90 mm	70.090.06V	70.090.06S	33,7	3,2	90	17,0
1"	x	100 mm	70.100.06V	70.100.06S	33,7	3,2	100	17,0
1"	x	110 mm	70.110.06V	70.110.06S	33,7	3,2	110	17,0
1"	x	120 mm	70.120.06V	70.120.06S	33,7	3,2	120	17,0
1"	x	130 mm	70.130.06V	70.130.06S	33,7	3,2	130	17,0
1"	x	140 mm	70.140.06V	70.140.06S	33,7	3,2	140	17,0
1"	x	150 mm	70.150.06V	70.150.06S	33,7	3,2	150	17,0
1"	x	160 mm	70.160.06V	70.160.06S	33,7	3,2	160	17,0
1"	x	180 mm	70.180.06V	70.180.06S	33,7	3,2	180	17,0
1"	x	200 mm	70.200.06V	70.200.06S	33,7	3,2	200	17,0
1"	x	250 mm	70.250.06V	70.250.06S	33,7	3,2	250	17,0
1"	x	300 mm	70.300.06V	70.300.06S	33,7	3,2	300	17,0
1"	x	400 mm	70.400.06V	70.400.06S	33,7	3,2	400	17,0
1"	x	500 mm	70.500.06V	70.500.06S	33,7	3,2	500	17,0
1"	x	600 mm	70.600.06V	70.600.06S	33,7	3,2	600	17,0
1"	x	1000 mm	70.1000.06V	70.1000.06S	33,7	3,2	1000	17,0
1"	x	1500 mm	70.1500.06V	70.1500.06S	33,7	3,2	1500	17,0
1"	x	2000 mm	70.2000.06V	70.2000.06S	33,7	3,2	2000	17,0

Thread size (R)		Code galvanized		Code black		Dimension [mm]			
x (L) length		Barrel nipples		Barrel nipples		D	T	L	L1
1 1/4"	x 40 mm	70.040.07V	70.040.07V	70.040.07S	70.040.07S	42,4	3,2	40	20,0
1 1/4"	x 50 mm	70.050.07V	70.050.07V	70.050.07S	70.050.07S	42,4	3,2	50	20,0
1 1/4"	x 60 mm	70.060.07V	70.060.07V	70.060.07S	70.060.07S	42,4	3,2	60	20,0
1 1/4"	x 70 mm	70.070.07V	70.070.07V	70.070.07S	70.070.07S	42,4	3,2	70	20,0
1 1/4"	x 80 mm	70.080.07V	70.080.07V	70.080.07S	70.080.07S	42,4	3,2	80	20,0
1 1/4"	x 100 mm	70.100.07V	70.100.07V	70.100.07S	70.100.07S	42,4	3,2	100	20,0
1 1/4"	x 110 mm	70.110.07V	70.110.07V	70.110.07S	70.110.07S	42,4	3,2	110	20,0
1 1/4"	x 120 mm	70.120.07V	70.120.07V	70.120.07S	70.120.07S	42,4	3,2	120	20,0
1 1/4"	x 140 mm	70.140.07V	70.140.07V	70.140.07S	70.140.07S	42,4	3,2	140	20,0
1 1/4"	x 150 mm	70.150.07V	70.150.07V	70.150.07S	70.150.07S	42,4	3,2	150	20,0
1 1/4"	x 160 mm	70.160.07V	70.160.07V	70.160.07S	70.160.07S	42,4	3,2	160	20,0
1 1/4"	x 180 mm	70.180.07V	70.180.07V	70.180.07S	70.180.07S	42,4	3,2	180	20,0
1 1/4"	x 200 mm	70.200.07V	70.200.07V	70.200.07S	70.200.07S	42,4	3,2	200	20,0
1 1/4"	x 250 mm	70.250.07V	70.250.07V	70.250.07S	70.250.07S	42,4	3,2	250	20,0
1 1/4"	x 300 mm	70.300.07V	70.300.07V	70.300.07S	70.300.07S	42,4	3,2	300	20,0
1 1/4"	x 400 mm	70.400.07V	70.400.07V	70.400.07S	70.400.07S	42,4	3,2	400	20,0
1 1/4"	x 500 mm	70.500.07V	70.500.07V	70.500.07S	70.500.07S	42,4	3,2	500	20,0
1 1/4"	x 600 mm	70.600.07V	70.600.07V	70.600.07S	70.600.07S	42,4	3,2	600	20,0
1 1/4"	x 1000 mm	70.1000.07V	70.1000.07V	70.1000.07S	70.1000.07S	42,4	3,2	1000	20,0
1 1/4"	x 1500 mm	70.1500.07V	70.1500.07V	70.1500.07S	70.1500.07S	42,4	3,2	1500	20,0
1 1/4"	x 2000 mm	70.2000.07V	70.2000.07V	70.2000.07S	70.2000.07S	42,4	3,2	2000	20,0
1 1/2"	x 40 mm	70.040.08V	70.040.08V	70.040.08S	70.040.08S	48,3	3,2	40	20,0
1 1/2"	x 50 mm	70.050.08V	70.050.08V	70.050.08S	70.050.08S	48,3	3,2	50	20,0
1 1/2"	x 60 mm	70.060.08V	70.060.08V	70.060.08S	70.060.08S	48,3	3,2	60	20,0
1 1/2"	x 70 mm	70.070.08V	70.070.08V	70.070.08S	70.070.08S	48,3	3,2	70	20,0
1 1/2"	x 80 mm	70.080.08V	70.080.08V	70.080.08S	70.080.08S	48,3	3,2	80	20,0
1 1/2"	x 90 mm	70.090.08V	70.090.08V	70.090.08S	70.090.08S	48,3	3,2	90	20,0
1 1/2"	x 100 mm	70.100.08V	70.100.08V	70.100.08S	70.100.08S	48,3	3,2	100	20,0
1 1/2"	x 110 mm	70.110.08V	70.110.08V	70.110.08S	70.110.08S	48,3	3,2	110	20,0
1 1/2"	x 120 mm	70.120.08V	70.120.08V	70.120.08S	70.120.08S	48,3	3,2	120	20,0
1 1/2"	x 130 mm	70.130.08V	70.130.08V	70.130.08S	70.130.08S	48,3	3,2	130	20,0
1 1/2"	x 140 mm	70.140.08V	70.140.08V	70.140.08S	70.140.08S	48,3	3,2	140	20,0
1 1/2"	x 150 mm	70.150.08V	70.150.08V	70.150.08S	70.150.08S	48,3	3,2	150	20,0
1 1/2"	x 160 mm	70.160.08V	70.160.08V	70.160.08S	70.160.08S	48,3	3,2	160	20,0
1 1/2"	x 170 mm	70.170.08V	70.170.08V	70.170.08S	70.170.08S	48,3	3,2	170	20,0
1 1/2"	x 180 mm	70.180.08V	70.180.08V	70.180.08S	70.180.08S	48,3	3,2	180	20,0
1 1/2"	x 200 mm	70.200.08V	70.200.08V	70.200.08S	70.200.08S	48,3	3,2	200	20,0
1 1/2"	x 250 mm	70.250.08V	70.250.08V	70.250.08S	70.250.08S	48,3	3,2	250	20,0
1 1/2"	x 300 mm	70.300.08V	70.300.08V	70.300.08S	70.300.08S	48,3	3,2	300	20,0
1 1/2"	x 400 mm	70.400.08V	70.400.08V	70.400.08S	70.400.08S	48,3	3,2	400	20,0
1 1/2"	x 500 mm	70.500.08V	70.500.08V	70.500.08S	70.500.08S	48,3	3,2	500	20,0
1 1/2"	x 1000 mm	70.1000.08V	70.1000.08V	70.1000.08S	70.1000.08S	48,3	3,2	1000	20,0
1 1/2"	x 2000 mm	70.2000.08V	70.2000.08V	70.2000.08S	70.2000.08S	48,3	3,2	2000	20,0
2"	x 40 mm	70.040.09V	70.040.09V	70.040.09S	70.040.09S	60,3	3,6	40	23,0
2"	x 50 mm	70.050.09V	70.050.09V	70.050.09S	70.050.09S	60,3	3,6	50	23,0
2"	x 60 mm	70.060.09V	70.060.09V	70.060.09S	70.060.09S	60,3	3,6	60	23,0
2"	x 70 mm	70.070.09V	70.070.09V	70.070.09S	70.070.09S	60,3	3,6	70	23,0
2"	x 80 mm	70.080.09V	70.080.09V	70.080.09S	70.080.09S	60,3	3,6	80	23,0
2"	x 100 mm	70.100.09V	70.100.09V	70.100.09S	70.100.09S	60,3	3,6	100	23,0
2"	x 110 mm	70.110.09V	70.110.09V	70.110.09S	70.110.09S	60,3	3,6	110	23,0
2"	x 120 mm	70.120.09V	70.120.09V	70.120.09S	70.120.09S	60,3	3,6	120	23,0
2"	x 140 mm	70.140.09V	70.140.09V	70.140.09S	70.140.09S	60,3	3,6	140	23,0
2"	x 150 mm	70.150.09V	70.150.09V	70.150.09S	70.150.09S	60,3	3,6	150	23,0
2"	x 160 mm	70.160.09V	70.160.09V	70.160.09S	70.160.09S	60,3	3,6	160	23,0
2"	x 180 mm	70.180.09V	70.180.09V	70.180.09S	70.180.09S	60,3	3,6	180	23,0
2"	x 200 mm	70.200.09V	70.200.09V	70.200.09S	70.200.09S	60,3	3,6	200	23,0
2"	x 250 mm	70.250.09V	70.250.09V	70.250.09S	70.250.09S	60,3	3,6	250	23,0
2"	x 300 mm	70.300.09V	70.300.09V	70.300.09S	70.300.09S	60,3	3,6	300	23,0
2"	x 500 mm	70.500.09V	70.500.09V	70.500.09S	70.500.09S	60,3	3,6	500	23,0
2"	x 1000 mm	70.1000.09V	70.1000.09V	70.1000.09S	70.1000.09S	60,3	3,6	1000	23,0
2"	x 2000 mm	70.2000.09V	70.2000.09V	70.2000.09S	70.2000.09S	60,3	3,6	2000	23,0
2 1/2"	x 60 mm	70.060.10V	70.060.10V	70.060.10S	70.060.10S	76,1	3,6	60	27,0
2 1/2"	x 80 mm	70.080.10V	70.080.10V	70.080.10S	70.080.10S	76,1	3,6	80	27,0
2 1/2"	x 100 mm	70.100.10V	70.100.10V	70.100.10S	70.100.10S	76,1	3,6	100	27,0
2 1/2"	x 120 mm	70.120.10V	70.120.10V	70.120.10S	70.120.10S	76,1	3,6	120	27,0
2 1/2"	x 150 mm	70.150.10V	70.150.10V	70.150.10S	70.150.10S	76,1	3,6	150	27,0
2 1/2"	x 200 mm	70.200.10V	70.200.10V	70.200.10S	70.200.10S	76,1	3,6	200	27,0
2 1/2"	x 250 mm	70.250.10V	70.250.10V	70.250.10S	70.250.10S	76,1	3,6	250	27,0
2 1/2"	x 300 mm	70.300.10V	70.300.10V	70.300.10S	70.300.10S	76,1	3,6	300	27,0
2 1/2"	x 400 mm	70.400.10V	70.400.10V	70.400.10S	70.400.10S	76,1	3,6	400	27,0
2 1/2"	x 500 mm	70.500.10V	70.500.10V	70.500.10S	70.500.10S	76,1	3,6	500	27,0

Thread size (R)			Code galvanized	Code black	Dimension [mm]			
x (L) length			Barrel nipples	Barrel nipples	D	T	L	L1
3"	x	60 mm	70.060.11V	70.060.11S	88,9	4,0	60	30,0
3"	x	80 mm	70.080.11V	70.080.11S	88,9	4,0	80	30,0
3"	x	100 mm	70.100.11V	70.100.11S	88,9	4,0	100	30,0
3"	x	120 mm	70.120.11V	70.120.11S	88,9	4,0	120	30,0
3"	x	150 mm	70.150.11V	70.150.11S	88,9	4,0	150	30,0
3"	x	180 mm	70.180.11V	70.180.11S	88,9	4,0	180	30,0
3"	x	200 mm	70.200.11V	70.200.11S	88,9	4,0	200	30,0
3"	x	250 mm	70.250.11V	70.250.11S	88,9	4,0	250	30,0
3"	x	300 mm	70.300.11V	70.300.11S	88,9	4,0	300	30,0
3"	x	500 mm	70.500.11V	70.500.11S	88,9	4,0	500	30,0
4"	x	60 mm	70.060.12V	70.060.12S	114,3	4,5	60	36,0
4"	x	80 mm	70.080.12V	70.080.12S	114,3	4,5	80	36,0
4"	x	100 mm	70.100.12V	70.100.12S	114,3	4,5	100	36,0
4"	x	120 mm	70.120.12V	70.120.12S	114,3	4,5	120	36,0
4"	x	150 mm	70.150.12V	70.150.12S	114,3	4,5	150	36,0
4"	x	180 mm	70.180.12V	70.180.12S	114,3	4,5	180	36,0
4"	x	200 mm	70.200.12V	70.200.12S	114,3	4,5	200	36,0
4"	x	250 mm	70.250.12V	70.250.12S	114,3	4,5	250	36,0
4"	x	300 mm	70.300.12V	70.300.12S	114,3	4,5	300	36,0
4"	x	500 mm	70.500.12V	70.500.12S	114,3	4,5	500	36,0
4"	x	1000 mm	70.1000.12V	70.1000.12S	114,3	4,5	1000	36,0

### BARREL NIPPLE, LONG THREAD, GALVANIZED OR BLACK



**PARAMETERS:** following to DIN EN 10241

**MATERIAL:** steel pipe according to DIN EN 10255

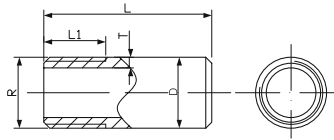
**THREADS:** accordingly to ISO 7/1

**SIZES:** from 3/8" to 2"

Thread size (R)			Code galvanized	Code black	Dimension [mm]					
x (L) length			Barrel nipples	Barrel nipples	D	T	L	L1	L2	
3/8"	x	100 mm	71.100.03V	71.100.03S	17,2	2,3	100	12	50	
3/8"	x	150 mm	71.150.03V	71.150.03S	17,2	2,3	150	12	60	
3/8"	x	200 mm	71.200.03V	71.200.03S	17,2	2,3	200	12	60	
3/8"	x	300 mm	71.300.03V	71.300.03S	17,2	2,3	300	12	60	
1/2"	x	100 mm	71.100.04V	71.100.04S	21,3	2,6	100	15	50	
1/2"	x	150 mm	71.150.04V	71.150.04S	21,3	2,6	150	15	60	
1/2"	x	200 mm	71.200.04V	71.200.04S	21,3	2,6	200	15	60	
1/2"	x	300 mm	71.300.04V	71.300.04S	21,3	2,6	300	15	60	
3/4"	x	100 mm	71.100.05V	71.100.05S	26,9	2,6	100	15	50	
3/4"	x	120 mm	71.120.05V	71.120.05S	26,9	2,6	120	15	50	
3/4"	x	150 mm	71.150.05V	71.150.05S	26,9	2,6	150	15	60	
3/4"	x	200 mm	71.200.05V	71.200.05S	26,9	2,6	200	15	60	
3/4"	x	300 mm	71.300.05V	71.300.05S	26,9	2,6	300	15	60	

Thread size (R)			Code galvanized		Code black		Dimension [mm]				
x (L) length			Barrel nipples		Barrel nipples		D	T	L	L1	L2
1"	x	100 mm	<b>71.100.06V</b>		<b>71.100.06S</b>		33.7	3.2	100	17	50
1"	x	140 mm	<b>71.140.06V</b>		<b>71.140.06S</b>		33.7	3.2	140	17	50
1"	x	150 mm	<b>71.150.06V</b>		<b>71.150.06S</b>		33.7	3.2	150	17	70
1"	x	200 mm	<b>71.200.06V</b>		<b>71.200.06S</b>		33.7	3.2	200	17	70
1"	x	300 mm	<b>71.300.06V</b>		<b>71.300.06S</b>		33.7	3.2	300	17	70
1 1/4"	x	100 mm	<b>71.100.07V</b>		<b>71.100.07S</b>		42.4	3.2	100	20	50
1 1/4"	x	150 mm	<b>71.150.07V</b>		<b>71.150.07S</b>		42.4	3.2	150	20	70
1 1/4"	x	200 mm	<b>71.200.07V</b>		<b>71.200.07S</b>		42.4	3.2	200	20	70
1 1/4"	x	300 mm	<b>71.300.07V</b>		<b>71.300.07S</b>		42.4	3.2	300	20	70
1 1/2"	x	100 mm	<b>71.100.08V</b>		<b>71.100.08S</b>		48.3	3.2	100	20	50
1 1/2"	x	150 mm	<b>71.150.08V</b>		<b>71.150.08S</b>		48.3	3.2	150	20	70
1 1/2"	x	180 mm			<b>71.180.08S</b>		48.3	3.2	180	20	70
1 1/2"	x	200 mm	<b>71.200.08V</b>		<b>71.200.08S</b>		48.3	3.2	200	20	70
1 1/2"	x	300 mm	<b>71.300.08V</b>		<b>71.300.08S</b>		48.3	3.2	300	20	70
2"	x	100 mm	<b>71.100.09V</b>		<b>71.100.09S</b>		60.3	3.6	100	23	50
2"	x	150 mm	<b>71.150.09V</b>		<b>71.150.09S</b>		60.3	3.6	150	23	80
2"	x	170 mm			<b>71.170.09S</b>		60.3	3.6	170	23	80
2"	x	200 mm	<b>71.200.09V</b>		<b>71.200.09S</b>		60.3	3.6	200	23	80
2"	x	300 mm	<b>71.300.09V</b>		<b>71.300.09S</b>		60.3	3.6	300	23	80

NIPPLE, ONE END THREAD, GALVANIZED OR BLACK



**PARAMETERS:** following to DIN EN 10241

**MATERIAL:** steel pipe according to DIN EN 10255

**THREADS:** accordingly to ISO 7/1

**SIZES:** from 3/8" to 2"

Thread size (R)			Code galvanized		Code black		Dimension [mm]			
x (L) length			Barrel nipples		Barrel nipples		D	T	L	L1
3/8"	x	60 mm	<b>72.060.03V</b>		<b>72.060.03S</b>		17.2	2.3	60	12
3/8"	x	100 mm	<b>72.100.03V</b>		<b>72.100.03S</b>		17.2	2.3	100	12
3/8"	x	150 mm	<b>72.150.03V</b>		<b>72.150.03S</b>		17.2	2.3	150	12
3/8"	x	200 mm	<b>72.200.03V</b>		<b>72.200.03S</b>		17.2	2.3	200	12
1/2"	x	60 mm			<b>72.060.04S</b>		21.3	2.6	60	15
1/2"	x	100 mm	<b>72.100.04V</b>		<b>72.100.04S</b>		21.3	2.6	100	15
1/2"	x	150 mm	<b>72.150.04V</b>		<b>72.150.04S</b>		21.3	2.6	150	15
1/2"	x	200 mm	<b>72.200.04V</b>		<b>72.200.04S</b>		21.3	2.6	200	15
1/2"	x	300 mm	<b>72.300.04V</b>		<b>72.300.04S</b>		21.3	2.6	300	15
3/4"	x	100 mm	<b>72.100.05V</b>		<b>72.100.05S</b>		26.9	2.6	100	15
3/4"	x	150 mm	<b>72.150.05V</b>		<b>72.150.05S</b>		26.9	2.6	150	15
3/4"	x	200 mm	<b>72.200.05V</b>		<b>72.200.05S</b>		26.9	2.6	200	15
3/4"	x	300 mm	<b>72.300.05V</b>		<b>72.300.05S</b>		26.9	2.6	300	15

Thread size (R)			Code galvanized	Code black	Dimension [mm]			
x (L) length			Barrel nipples	Barrel nipples	D	T	L	L1
1"	x	100 mm	<b>72.100.06V</b>	<b>72.100.06S</b>	33.7	3.2	100	17
1"	x	150 mm	<b>72.150.06V</b>	<b>72.150.06S</b>	33.7	3.2	150	17
1"	x	200 mm	<b>72.200.06V</b>	<b>72.200.06S</b>	33.7	3.2	200	17
1"	x	300 mm	<b>72.300.06V</b>	<b>72.300.06S</b>	33.7	3.2	300	17
1 1/4"	x	100 mm	<b>72.100.07V</b>	<b>72.100.07S</b>	42.4	3.2	100	20
1 1/4"	x	150 mm	<b>72.150.07V</b>	<b>72.150.07S</b>	42.4	3.2	150	20
1 1/4"	x	200 mm	<b>72.200.07V</b>	<b>72.200.07S</b>	42.4	3.2	200	20
1 1/4"	x	250 mm	<b>72.250.07V</b>	<b>72.250.07S</b>	42.4	3.2	250	20
1 1/4"	x	300 mm	<b>72.300.07V</b>	<b>72.300.07S</b>	42.4	3.2	300	20
1 1/2"	x	100 mm	<b>72.100.08V</b>	<b>72.100.08S</b>	48.3	3.2	100	20
1 1/2"	x	150 mm	<b>72.150.08V</b>	<b>72.150.08S</b>	48.3	3.2	150	20
1 1/2"	x	200 mm	<b>72.200.08V</b>	<b>72.200.08S</b>	48.3	3.2	200	20
1 1/2"	x	250 mm	<b>72.250.08V</b>	<b>72.250.08S</b>	48.3	3.2	250	20
1 1/2"	x	300 mm	<b>72.300.08V</b>	<b>72.300.08S</b>	48.3	3.2	300	20
2"	x	100 mm	<b>72.100.09V</b>	<b>72.100.09S</b>	60.3	3.6	100	23
2"	x	150 mm	<b>72.150.09V</b>	<b>72.150.09S</b>	60.3	3.6	150	23
2"	x	200 mm	<b>72.200.09V</b>	<b>72.200.09S</b>	60.3	3.6	200	23
2"	x	250 mm	<b>72.250.09V</b>	<b>72.250.09S</b>	60.3	3.6	250	23
2"	x	300 mm	<b>72.300.09V</b>	<b>72.300.09S</b>	60.3	3.6	300	23



**SOCKETS, BLACK**

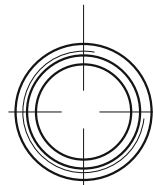
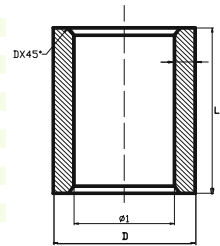
**FEATURES:** Following to DIN EN 10241

**COMPOSITION:** Steel pipe in compliance with DIN10255

**THREADS:** Accordingly to ISO 7/1



Size	Code galvanized	Dimensions [mm]	
		D	L
<b>Total length</b>			
1/8"	<b>73.001.01S</b>	14,0	17,0
1/4"	<b>73.001.02S</b>	17,0	25,0
3/8"	<b>73.001.03S</b>	21,3	26,0
1/2"	<b>73.001.04S</b>	26,4	34,0
3/4"	<b>73.001.05S</b>	31,8	36,0
1"	<b>73.001.06S</b>	39,5	43,0
1 1/4"	<b>73.001.07S</b>	48,3	48,0
1 1/2"	<b>73.001.08S</b>	54,5	48,0
2"	<b>73.001.09S</b>	66,3	56,0
2 1/2"	<b>73.001.10S</b>	82,0	66,0
3"	<b>73.001.11S</b>	95,0	71,0
4"	<b>73.001.12S</b>	122,0	83,0
<b>Half length</b>			
1/4"	<b>73.002.02S</b>	17,0	11,0
3/8"	<b>73.002.03S</b>	21,3	11,5
1/2"	<b>73.002.04S</b>	26,4	15,0
3/4"	<b>73.002.05S</b>	31,8	19,0
1"	<b>73.002.06S</b>	39,5	22,0
1 1/4"	<b>73.002.07S</b>	48,3	22,0
1 1/2"	<b>73.002.08S</b>	54,5	26,0
2"	<b>73.002.09S</b>	66,3	30,0
<b>Special length</b>			
3/8" x 60	<b>73.003.03.60S</b>	21,3	60,0
1/2" x 60	<b>73.003.04.60S</b>	26,4	60,0
1/2" x 80	<b>73.003.04.80S</b>	26,4	80,0
1/2" x 100	<b>73.003.04.100S</b>	26,4	100,0



CERTIFICATES

• **NATIONAL CERTIFICATES**